

Protection of Landscape Values in an Innovative Management Approach of the Biosphere Reserve Poľana

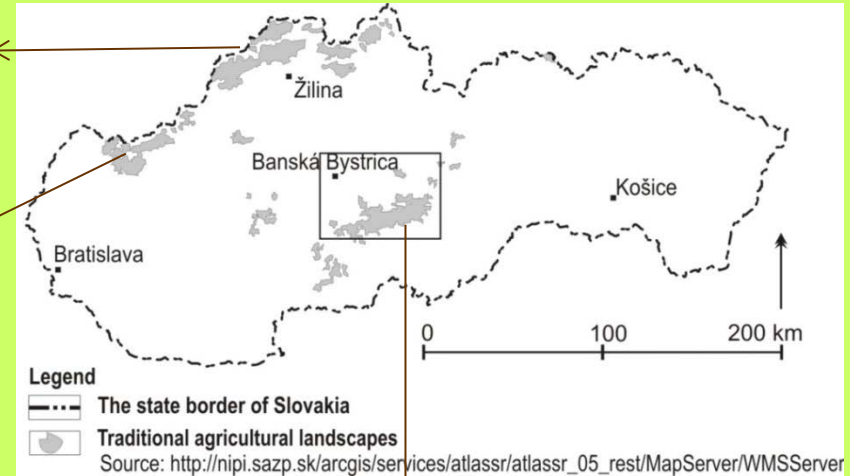


Vladimíra Fabriciusová, Martina Slámová, Peter Jančura

Natural heritage of the BR Poľana vs. cultural heritage

Protected areas in Slovakia with valuable cultural landscapes

Kysuce



Biele Karpaty



Poľana



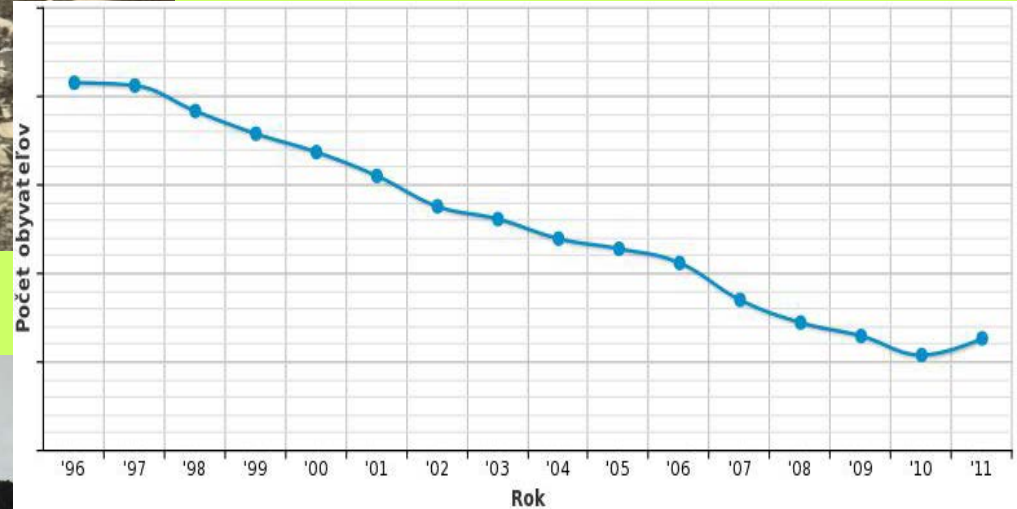
Landscape character – unique landscape type in Slovakia



Historical genesis of settlements and rural landscape



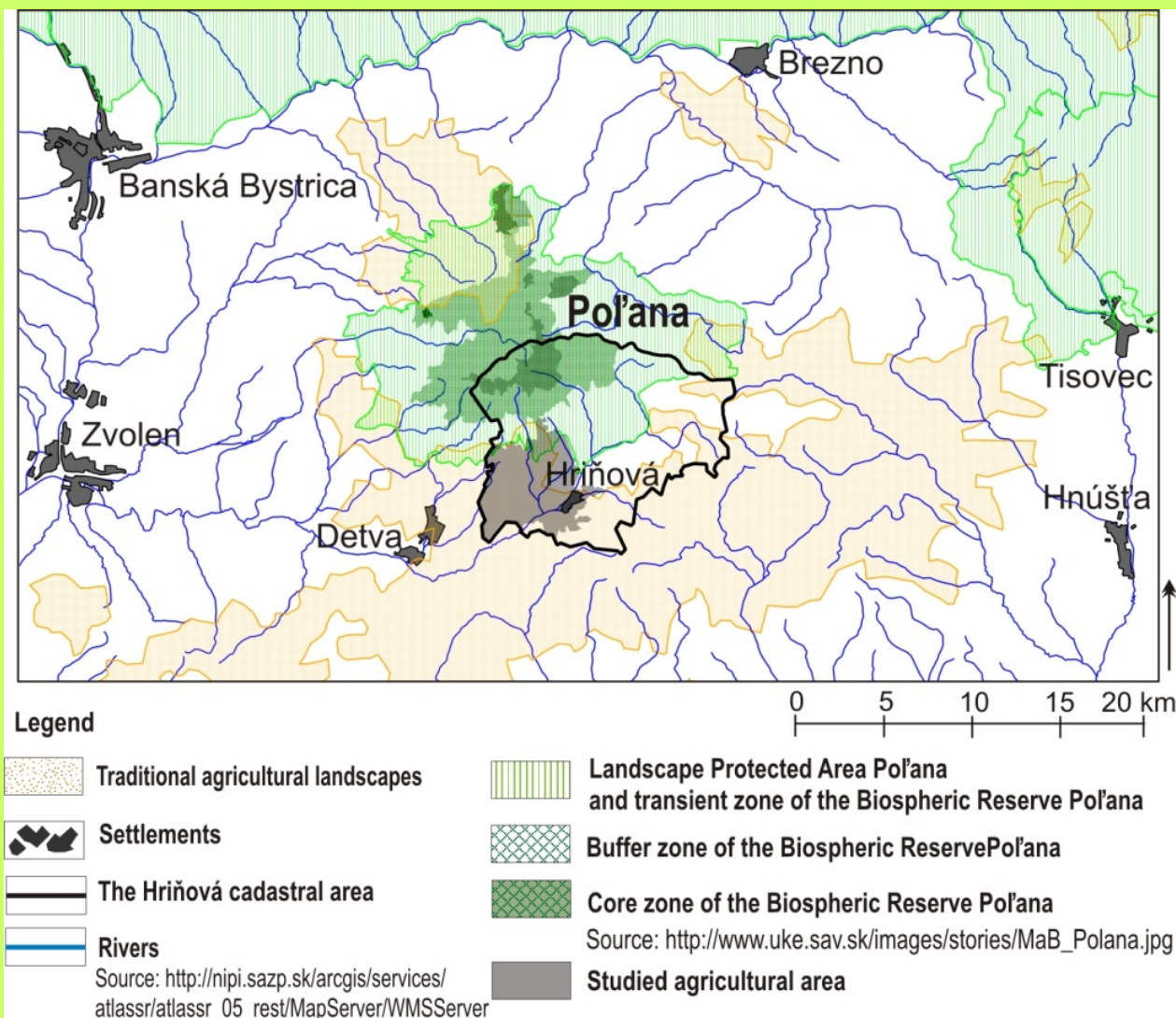
- 17th century: agriculture



- 19th /20th: wood processing
and glass industry

20th century: heavy industry

Traditionally farmed grasslands and the BR protected area



- BR: 20 360 ha
- „common landscape“ approx. 240 000 ha
- **nowadays Hriňová: 1324 ha of the BR**
- 400 inhabitants is living inside the BR in small settlements (Iviny, Snohy, Vrchsltina, Obchoditá)
- and app. **3.5000** in the Hriňová cadastral area (12649 ha) (potential for spreading BR)

460 m ASL - 1458 m ASL

Critics of the BR's management

UNESCO Paris 2013

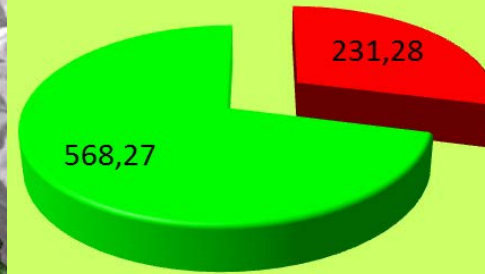
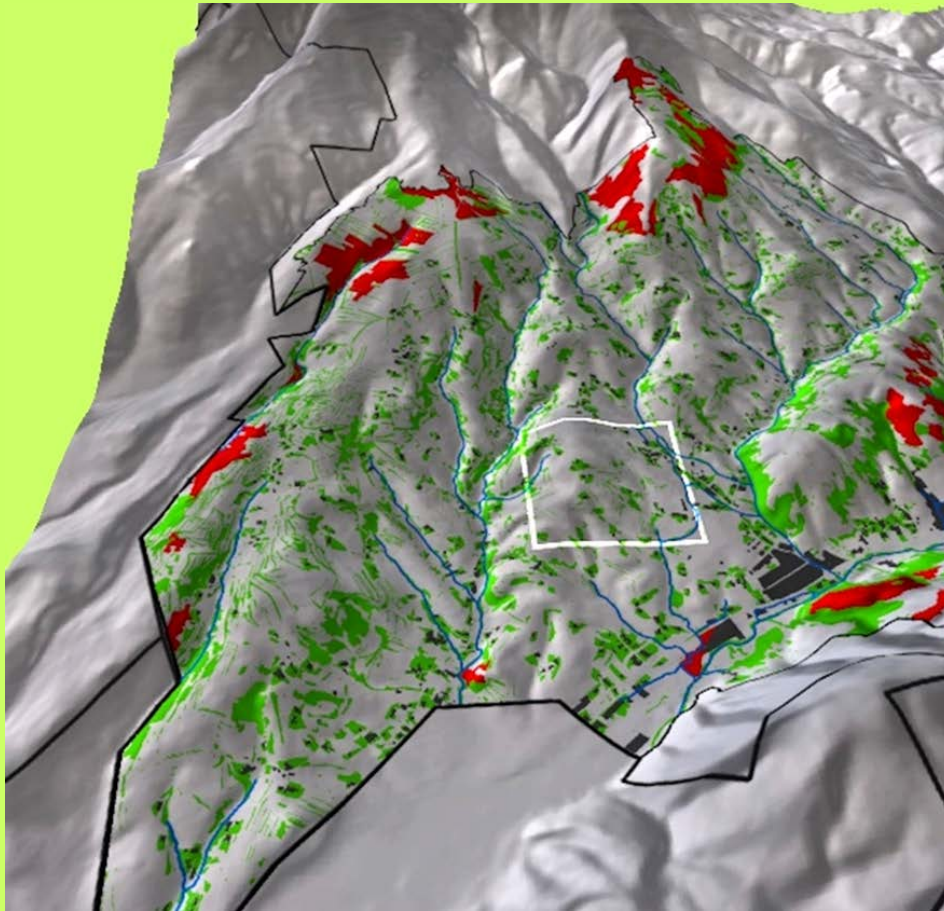


Action Plan Recommendations by MAB-IIC, Division of Ecological and Earth Sciences

- 3 APR 2013

- *increase cooperation with the tourism sector to better capture/benefit from this activity;*
- *improve the capacity to plan and coordinate research with participatory approach particularly socio-economic;*
- *improve the management towards more integrative approach;*
- *to enhance support for the biosphere reserve to enable better participation in the Network at the national and international levels;*
- *to improve local participation and economic development within and around the biosphere reserve, supported by socio-economic research.*

Negative trends in land use – succession processes



- Succession on the meadows and pastures
- Wooded non-forest vegetation areas



*in frame of the project Nature to people-
People to Nature local inhabitants
removed successive plants*

A guarantee for the preservation of this cultural landscape ?



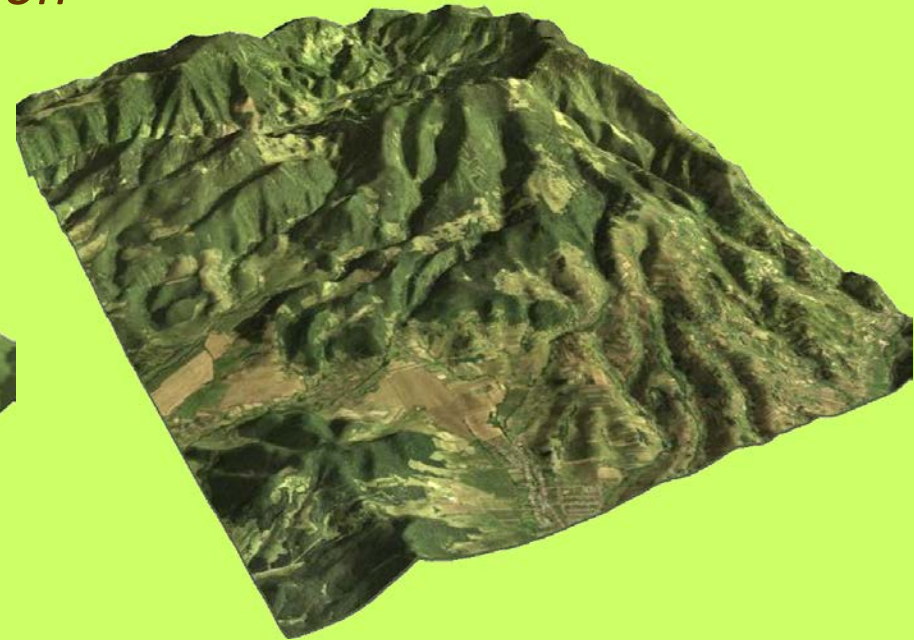
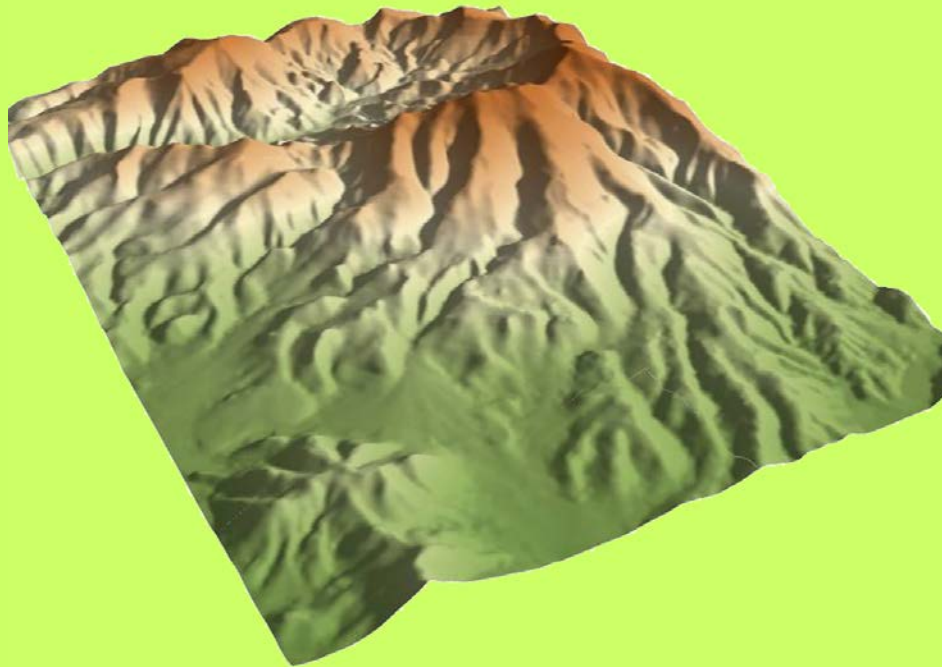
Landscape's features

Why is this landscape different ? Valuable ?

relief

land cover

combination

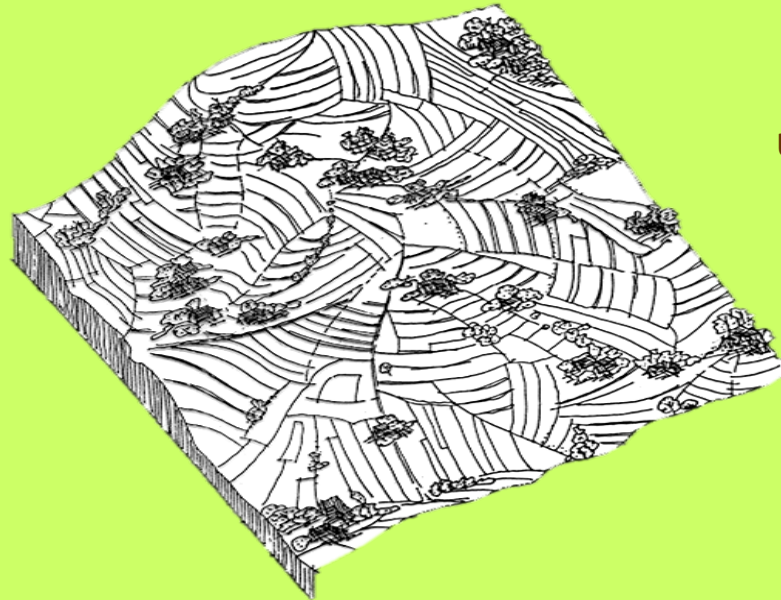
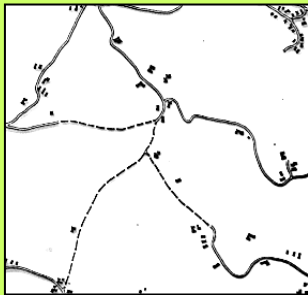


Landscape's features

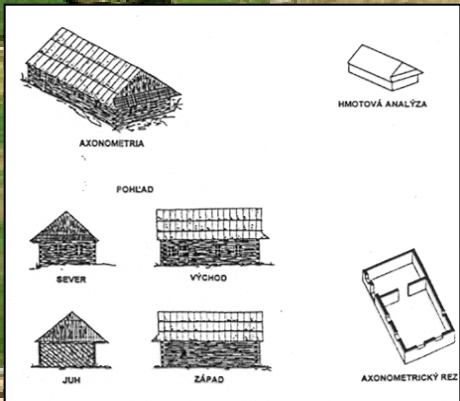
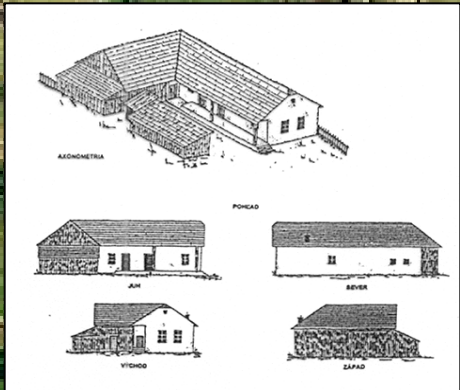


Scattered settlements „lazy“

Agrarian historical structures composed in lines and in fans on uplands with scattered settlements called „lazy“

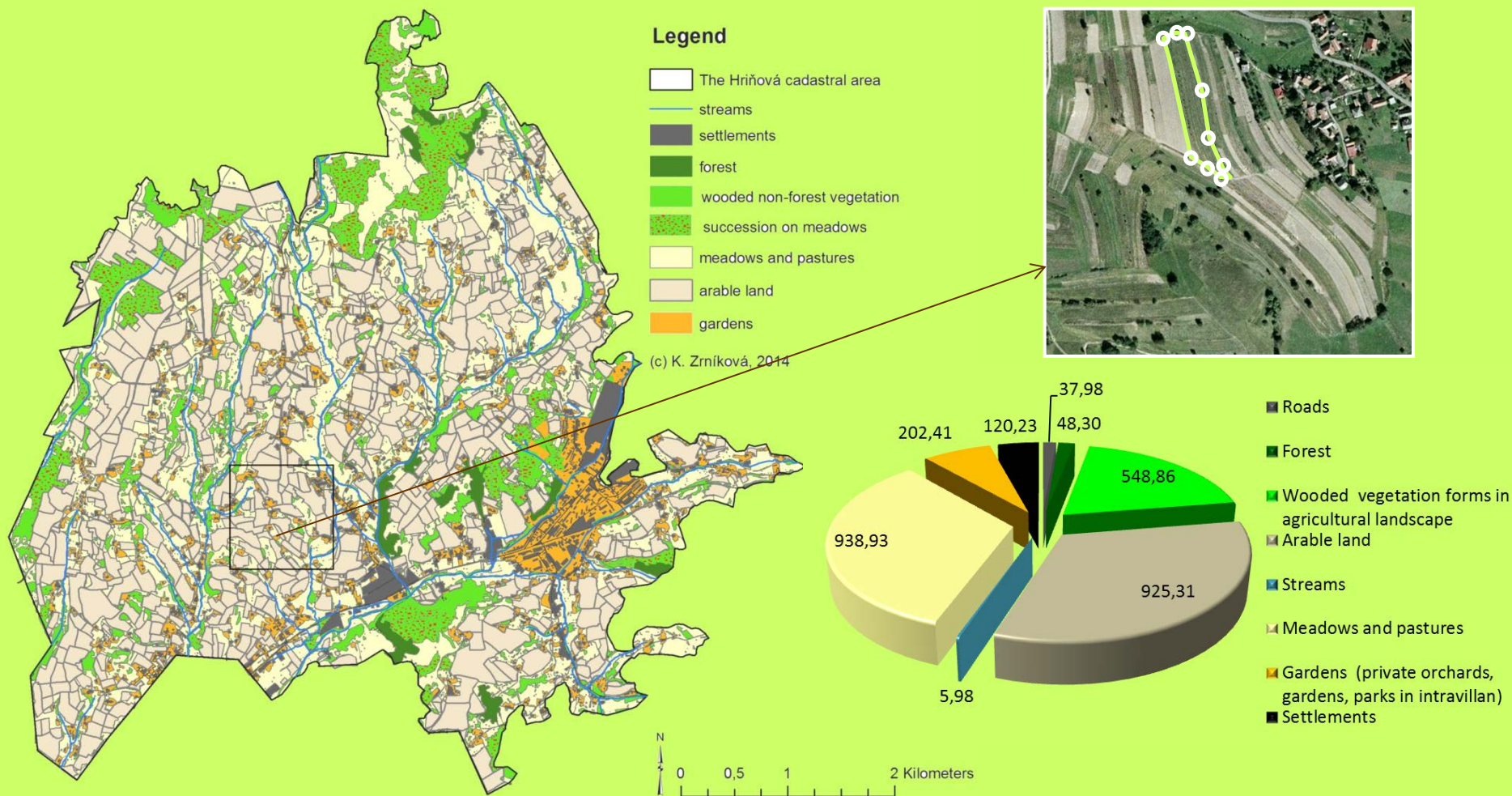


unique is combination



unique is combination

Attractive landscape pattern - diversity



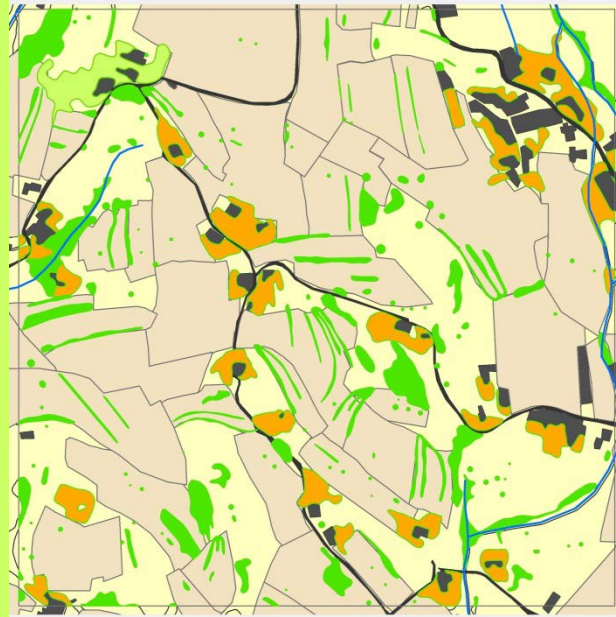
Land cover indexes/ classes	CA Coverage area [ha]	NP Number of patches	TE Total edge [m]	ED Edge density [m/ha]	MPS Mean patch size [ha]
Wooded vegetation forms	548.86	6194.00	911731.85	322.39	0.09
Arable land	925.31	1149.00	611401.77	216.20	0.81

Attractive landscape pattern



Landscape's features in a map

Land cover

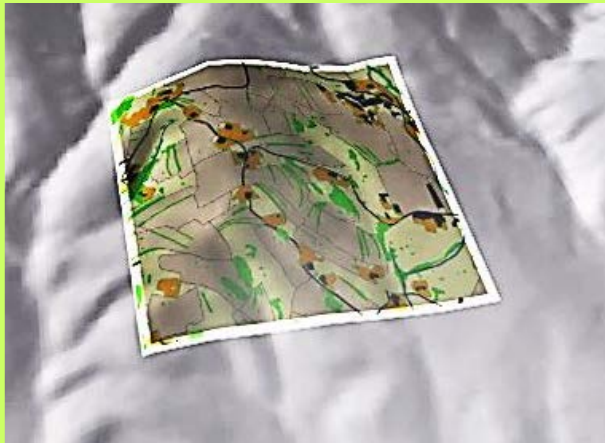


Legend

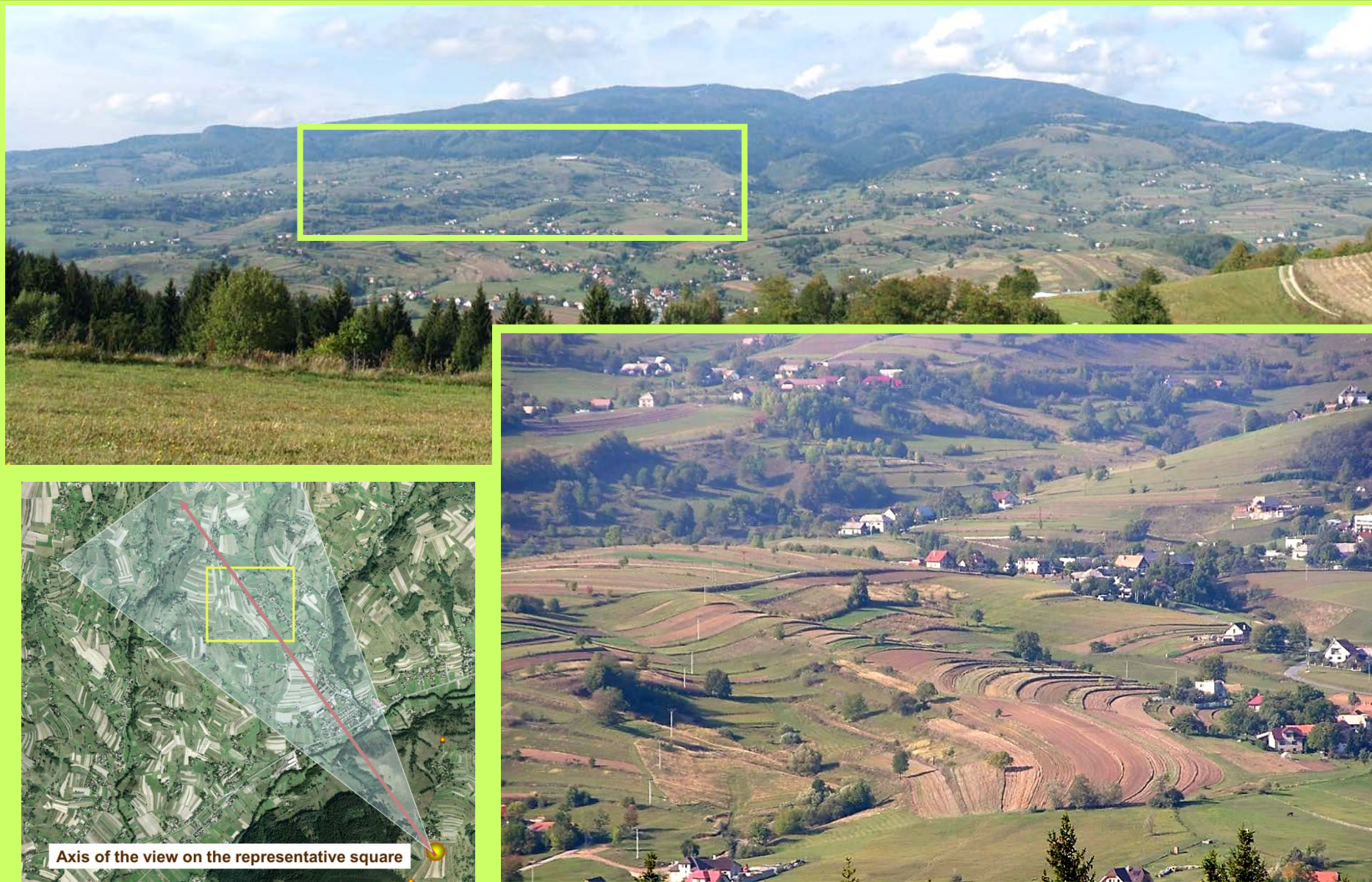
- The Hriňová cadastral area
- streams
- settlements and roads
- forest
- wooded non-forest vegetation
- meadows and pastures
- arable land
- gardens

(c) K. Zrníková, 2014

Land cover with relief and parcels with relief



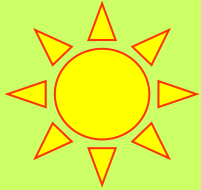
Visual appearance of landscape's features



Features evoke associations – ornaments, fests, folk traditions



Features evoke associations – a tasteful landscape



Mesto Hriňová,
MAS Podpoľanie,
OZ Tradičná chuť regiónov Slovenska
a Regionálna poľnohospodárska a potravinárska komora Zvolen
Vás pozývajú na

**Tradičná chuť
Podpoľania**

**v Hriňovej 19. júl 2014
Podpoľianske námestie**

Program:
Súťažná príprava tradičných jedál na mieste v čase 8.00-12.00 hod.
Hodnotenie jedál 13.00 hod.
Vyhodnotenie súťaže 13.00-14.00 hod.
Verejná ochutnávka tradičných jedál—14.00 hod.

Spracovateľské akcie:
Vystúpenie DFS Hviezdička a ŽSS Hriňovčianky
Kultúrny program detí prepojený s myšlienkou: „Slovensko je moja Zem, čo zasadím, to tu zjem“
Súťaže kulinárskych zručností
Odborný seminár k bezpečnosti potravín a surovín produkovaných na Slovensku
Prezentácia regiónu Podpoľanie
Potraviny očami detí- výstava ručných prác
Ponuka súťažných jedál
Predaj ľudovo- umeleckých výrobkov
Ukážky remeselných zručností

FF

sweet flour food

1. „Strudel from Poľana“,
Lucia Miňová, Vladimíra Fabriciusová
(S-CHKO Poľana)



http://mskshriňova.rajce.idnes.cz/Tradicnu_chut_Podpolania/

Features evoke associations – a living landscape



Gazdovanie na hrinovských lazoch

Tradičný hrinovský jarmok
Hriňová – časť Slanec
sobota, 31. 8. 2013

PROGRAM PODUJATIA
10.00 – 14.00
GAZDOVSKÉ DVORY – Európsky dvor, Poľský, Maďarský, Český, Srbský a Hriňovský s ponukou tradičných jedál.
11.00 – 13.00
Učebky tradičných poľnohospodárskych prác: oranie, kopanie zemiakov, šatva, nájatie obilia, bieleňie a rosenie plátna, podkúvanie koní, pečenie „pacifov“, ochutnávka falšiangových špeciálov a ďalšie.
11.00 – 13.00
TRADIČNÝ HRINOVSKÝ JARMOK – jednanie sa o baranca, kravy, kozy, voly, šlepty, koradé, krpca, „filiašy“ atď.
11.00 – 14.00
REMESELNÝ JARMOK – remeselníci z Podpoľania pripravili pre návštevníkov workshopy a svoje výrobky.
16.00 – 18.00 / Košútka
Galeriogram VRAŽTE V HRINOVSKÝ – DFS Malý Vábitok (Prievidza), DFS Matliak, DFS Hvozdička, DFS rozkazovečky, SKCS Dvorná (Vojňoska, Spišsko), ŽOS Hriňovčany, FS Hriňovčany, Ľahčovská, Kujataja Jan Čarovský.
19.00 – 04.00
Ludová zábava vo falšiangových maskách.

Spríevodné podujatia:
10.00 – 14.00
DETSKY DVOR – slohky, rozprávky, sčítača pre deti.

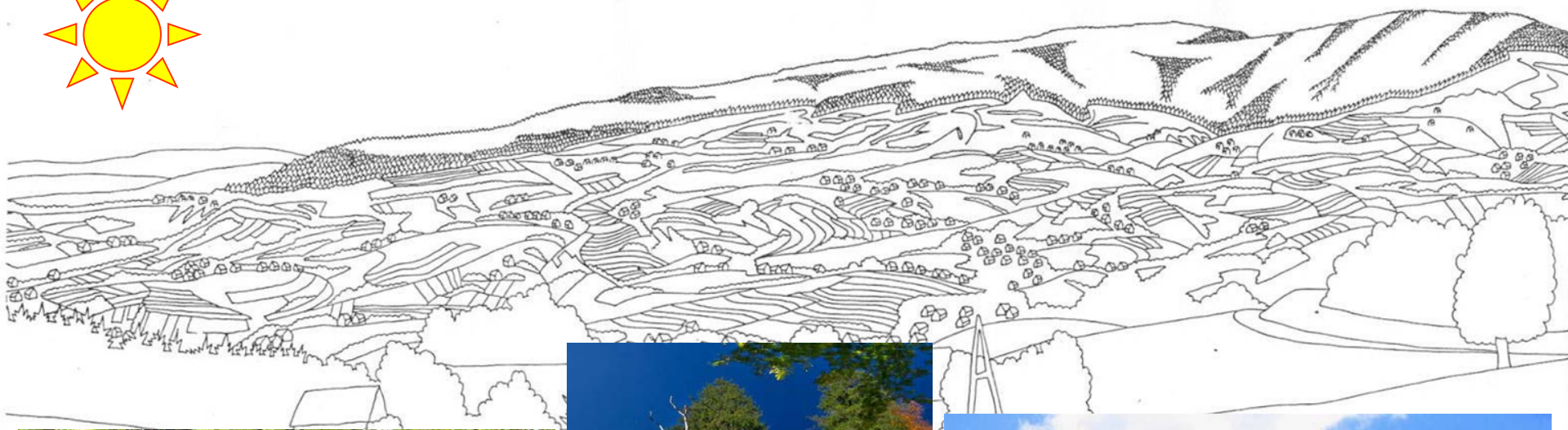
Vstupné: dospelí 1€, deti a ZTP 0,50€

Europe for Citizens

Sponsors: pontis, Slovenská sporiteľňa, Podpora, Vážo, NS, Košovka, etc.

Photo: CHKO Poľana, The Seminar on Raising of Ecological Awareness, 23. – 26. October, 2011, Stakčín, Slovakia

Features evoke associations – nature of the Poľana Mt.



*National Nature Reserve
Hrončecký grúň*



*National Nature monument
Vodopád Bystreho potoka*



Nature monument Jánošíkova skala

Photo: CHKO Poľana, The Seminar on Raising of Ecological Awareness, 23. – 26. October, 2011, Stakčín, Slovakia

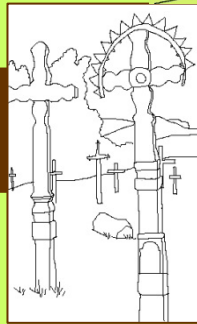
LANDSCAPE OBSERVATORIES IN EUROPE II, Politecnica Torino, 22-23 September 2014

Publicity of features



... only the complex of features generates identity of landscape

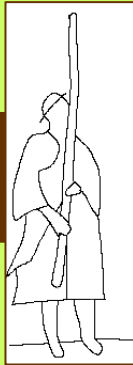
woodeed crosses



Polana



**folk culture
fests**



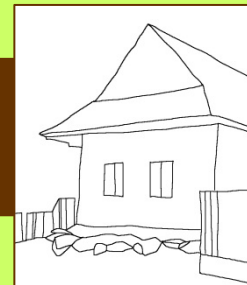
**traditional
agrarian fields**



**chalet
with sheeps**



**folk
houses**



Cultural landscape "Hriňovsko"

UNESCO heritage ? Part of the BR ?



Long-term visions of the BR



New Action Plan since 2013

*Sevilla Strategy,
Madrid Action Plan*

international co-operation BR Entlebuch, University of Bern

Trans-boarder Cooperation Programme between Slovakia and Hungary 2007-2013

- *„Together for the preservation of natural values in the Poľana area.*

Swiss-Slovak Cooperation Programme

- Civic association **PRONATUR** developed project *"Nature to People – People to Nature"*
- Project *"Development of Conservation and Protected areas in the Slovak Carpathians"*

*the 1st referendum about BR in Slovakia
- 12 000 respondents
- positive results !!!*

Participative planning and management

supporting actions
since 2010

Declared cooperation between PLA – BR Poľana Administration and State Forest Enterprise of the SR - stopped the interventions to rare ecosystems

Open day of the Poľana BR



Conference - 20th anniversary of the BR Poľana with stakeholders and representatives of scientific institutions

meetings

Hunting associations in PLA Poľana - cooperation on the issues of brown bear management

Farmers - traditional management of pastures/grasslands in BR Poľana

Stakeholders with representatives of the experts, scientists, delegations from abroad, state administration bodies

Interactions and communication

*meeting with the representatives of
State Forest Enterprise*



*the film „NNR Zadná Poľana“,
200 stakeholders participated*



Opening of a unique Ecocentre in 2012, 100 stakeholders participated



Participative planning and management

Environmental education



- talks, field trips, eco games and art classes where children create variety of things from natural materials

A scheme of viable activities for local farmers to preserve traditional agriculture

*"Nature to people - People to nature,,
with the main idea to do it for ourselves*

Pros

- *Based on the strategy of the regional identity – young generation is pride on the landscape*
- *Supporting of small businessmen by bigger companies*
- *Activities of individuals who can convey other people for „good idea“*
- *Co-ordination board was established and it consists of all subjects who have economical interests and ownership of plots in the region*

Cons

- *„Traditional“ is founding by external grants and projects*
- *Legislation and laws in Slovakia prevent the progress and development of local traditional activities (for instance law on work safety and health protection ...)*

Solutions

- *Giving proposals for legislation changes from locals (not waiting for a change made by a government)*
- *A condition is supporting of grants - private ownership of plots which has lasted for several generations (ancestral heritage)*

Spreading of the transitional zone of the BR Poľana



Thank you for attention



Photo: CHKO Poľana, The Seminar on Raising of Ecological Awareness, 23. – 26. October, 2011, Stakčín, Slovakia